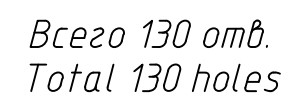
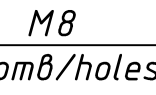


- 3

/ a

[illegible]
$$=$$


Technical drawing of a mechanical part showing a cross-section with dimensions and a detail view of a chamfer.

**Dimensions:**

- Overall width: 40
- Top section widths: 12, 3, 7, 3
- Top section height: 0.5
- Chamfer angle:  $6 \times 45^\circ$
- Bottom section width: 30
- Bottom section segments: 6, 7, 3
- Bottom section height: 6
- Outer diameter:  $\phi 76.7$
- Detail view dimensions:  $0.5^{+0.2}_0$

**Labels:**

- глубина развальцовки
- expansion depth

Diagram of a four-hole flange. The flange has four holes arranged in a square pattern. The distance between the centers of opposite holes is 108. The angle between the centerlines of adjacent holes is 60°.

\_\_\_\_\_

Technical drawing of a shaft with a diameter of 77 mm and a fillet radius R1.

[illegible]